



# THE RITZ - CARLTON RESIDENCES



## THE RITZ-CARLTON RESIDENCES

SOUTH BEACH

### COME HOME TO AN ELEVATED OCEANFRONT ESCAPE

INTRODUCING THE RITZ-CARLTON RESIDENCES, SOUTH BEACH. BOUTIQUE-SIZED AND EXQUISITELY LOCATED, THIS LIMITED COLLECTION OF JUST 30 OCEANFRONT BEACH HOUSES IN THE SKY FEATURES PANORAMIC ATLANTIC OCEAN AND HISTORIC MIAMI BEACH VIEWS.

#### PROPERTY OVERVIEW

- A LIMITED COLLECTION OF 30 BEACH HOUSES
  - CUSTOM-DESIGNED ONE- TO FIVE-BEDROOM RESIDENCES
  - TWO DUPLEX PENTHOUSES WITH PRIVATE ROOFTOP TERRACES FEATURING INDIVIDUAL OUTDOOR POOLS AND KITCHENS
- LEGENDARY RITZ-CARLTON SERVICE FROM BEACHFRONT TO RESIDENCES AND THROUGHOUT ALL AMENITY SPACES
- OVER 50,000 SQUARE FEET OF BESPOKE AMENITIES
- REFINED INTERIORS BY RENOWNED DESIGNER ALESSANDRO MUNGE OF STUDIO MUNGE
- ARCHITECTURE BY KOBI KARP ARCHITECTURE AND INTERIOR DESIGN INC.
- LUSH LANDSCAPING BY NATURALFICIAL
- DINING EXPERIENCES BY NOBEL PEACE PRIZE NOMINEE AND MICHELIN-STARRED CHEF JOSÉ ANDRÉS
- CULTURAL PROGRAMMING, INCLUDING CURATED CONTEMPORARY ART INSTALLATIONS

#### LOCATION

- SERENE BEACHFRONT ENCLAVE JUST MOMENTS FROM MIAMI'S INTERNATIONALLY ACCLAIMED DESTINATIONS FOR SHOPPING, DINING, ARTS, CULTURE, AND ENTERTAINMENT
- PREMIER LOCATION AT 1671 COLLINS AVENUE ADJACENT TO UPSCALE SHOPS AND CAFÉS ALONG PEDESTRIAN FRIENDLY LINCOLN ROAD

#### RESIDENCE FEATURES

- PANORAMIC OCEAN VIEWS FROM MOST RESIDENCES
- PRIVATE ELEVATOR WITH DIRECT ENTRY IN MOST RESIDENCES
- SWEEPING WRAP-AROUND TERRACES WITH ARCHITECTURAL GLASS RAILINGS IN MOST RESIDENCES
- AIRY 10-FOOT CEILINGS WITH FLOOR-TO-CEILING WINDOWS SHOWCASING VIEWS OF THE ATLANTIC OCEAN, MIAMI BEACH, AND BEYOND
- SPACIOUS LIVING, DINING, AND ENTERTAINING AREAS
- HAND-SELECTED NATURAL STONE FINISHES IN ALL BATHROOMS AND KITCHENS
  - KITCHEN: CALACATTA EXTRA MARBLE
  - PRIMARY BATHROOM: PAONAZZO EXTRA MARBLE
  - SECONDARY BATHROOMS: BLUE MOON QUARTZITE
  - POWDER ROOMS: QUARZO ROSA QUARTZITE
- CUSTOM FRENCH WHITE OAK FLOORING THROUGHOUT
- LUTRON LIGHTING CONTROL SYSTEM
- FULL-SIZED WASHERS AND VENTED DRYERS IN SELECT RESIDENCES
- PRE-WIRING AND POCKETS FOR CUSTOM WINDOW TREATMENTS
- MIAMI-DADE NOA-RATED WINDOW SYSTEMS FOR HURRICANE RESISTIVITY
- 24-HOUR VALET PARKING

THE RITZ-CARLTON RESIDENCES, SOUTH BEACH

1671 COLLINS AVE MIAMI BEACH, FL 33139

THE RITZ-CARLTON RESIDENCES, SOUTH BEACH ARE NOT OWNED, DEVELOPED OR SOLD BY THE RITZ-CARLTON HOTEL COMPANY, L.L.C. OR ITS AFFILIATES ("RITZ-CARLTON"). SOME BUY DEVELOPMENT, L.L.C. USES THE RITZ-CARLTON MARKS UNDER A LICENSE FROM RITZ-CARLTON, WHICH HAS NOT CONFIRMED THE ACCURACY OF ANY OF THE STATEMENTS OR REPRESENTATIONS MADE. HEREBY, DESCRIPTIONS OF FINISHES, SPECIFICATIONS, BRANDS, MODELS AND OTHER MATTERS OF DETAIL ARE CONCEPTUAL ONLY AND PROVIDED FOR CONVENIENCE OF REFERENCE AND SOLELY FOR THE PURPOSE OF SHOWING APPROXIMATE LEVEL OF QUALITY AND SHOULD NOT BE RELIED UPON BY BUYERS AS A BASIS FOR PURCHASING A UNIT. NOTHING HEREIN SHOULD BE RELIED UPON AS REPRESENTATIONS, EXPRESS OR IMPLIED, OF THE FINAL DETAIL OF THE UNIT OR PROJECT. THE INFORMATION PROVIDED INCLUDES SPECIFIC BRAND, MODEL AND FINISHES, BASED UPON CURRENTLY AVAILABLE INFORMATION, AND IS SUBJECT TO CHANGE WITHOUT NOTICE. ALL LISTED ITEMS ARE BASED UPON TODAY'S BRAND, MODEL AND FINISHES, AND MAY VARY FROM DESIGNER MODELS AND OFFERINGS AT THE TIME OF PURCHASE. FOR INSTALLATION IN THE UNIT, DEVELOPER HAS THE RIGHT TO MODIFY, SUBSTITUTE OR CHANGE MATERIALS, SPECIFICATIONS AND/OR COLORS UTILIZED IN FLOOR, WALL, DOOR, CABINETS, COUNTERTOPS AND OTHER ITEMS OF FINISH. CERTAIN OF THE FOREGOING ITEMS ARE SUBJECT TO SIZE AND COLOR VARIATIONS, DRIVEN AND QUALITY VARIATIONS, AND MAY VARY ACCORDANCE WITH PRICE, AVAILABILITY AND CHANGES IN MANUFACTURING. THESE CHANGES OR VARIATIONS SHALL BE MADE WITHOUT NOTICE. ALL LISTED AMENITIES, SERVICES AND MEMBERS OF THE DESIGN TEAM ARE SUBJECT TO CHANGE WITHOUT NOTICE. ALL RITZ-CARLTON SERVICES ARE CONDITIONED UPON APPROPRIATE LICENSES AND OR AGREEMENTS BEING MAINTAINED FOR THE PROVISION OF SUCH SERVICES. CERTAIN SERVICES MAY BE OFFERED FOR A SEPARATE FEE OR ON A VACATION BASIS. ONLY ORAL REPRESENTATIONS CANNOT BE RELIED UPON AS CORRECTLY STATING THE REPRESENTATIONS OF THE DEVELOPER. FOR CORRECT REPRESENTATIONS, REFERENCE SHOULD BE MADE TO THE DOCUMENTS REFERRED BY SECTION THREE, FLOOR PLANS, TO BE FURNISHED BY A DEVELOPER TO ALL BUYER OR LESSEE. 3. THESE OFFERS OR SELLERS ONLY BY THE OFFERING DOCUMENTS FOR THE CONDOMINIUM AND NO STATEMENT SHOULD BE RELIED UPON IF NOT MADE IN THE OFFERING DOCUMENTS. THIS IS NOT AN OFFER TO SELL OR SOLICITATION OF OFFERS TO BUY THE CONDOMINIUM UNITS IN STATES WHERE SUCH OFFER OR SOLICITATION CANNOT BE MADE. PRICES, PLANS AND SPECIFICATIONS ARE SUBJECT TO CHANGE WITHOUT NOTICE.

WE ARE PLEDGED TO THE LETTER AND SPIRIT OF THE U.S. POLICY FOR ACHIEVEMENT OF EQUAL HOUSING OPPORTUNITY THROUGHOUT THE NATION. WE ENCOURAGE AND SUPPORT AN AFFIRMATIVE ADVERTISING AND MARKETING PROGRAM IN WHICH THERE ARE NO BARRIERS TO OBTAINING HOUSING BECAUSE OF RACE, COLOR, RELIGION, SEX, HANDICAP, RACIAL STATUS OR NATIONAL ORIGIN.



KITCHENS  
BY STUDIO MUNGE

- ## PRIMARY BATHROOM SUITE BY STUDIO MUNGE

- ## SECONDARY BATHROOMS BY STUDIO MUNGE

- POWDER ROOM  
BY STUDIO MUNGE

- THE RITZ-CARLTON RESIDENCES, SOUTH BEACH

1671 COLLINS AVE MIAMI BEACH, FL 33139







## THE RITZ-CARLTON RESIDENCES

SOUTH BEACH

### PERSONALIZED SERVICES

ANTICIPATE BESPOKE SERVICE AT EVERY TURN WITH EXPERT STAFF AVAILABLE FOR EVERYTHING FROM ENHANCING BEACHFRONT LEISURE TIME AND ORCHESTRATING IN-RESIDENCE ASSISTANCE TO ARRANGING DINING AND ENTERTAINMENT EXCURSIONS AROUND MIAMI, AMONG MANY POSSIBILITIES.

### ADDITIONAL SERVICES

- 24-HOUR VALET PARKING SERVICE
- BEACH CONCIERGE SERVICES
- BUSINESS SERVICES
- AIRLINE/PRIVATE AIR RESERVATIONS
- AIRPORT/GROUND TRANSPORTATION ARRANGEMENTS
- ORDERING FLORAL ARRANGEMENTS
- ACTIVITY ARRANGEMENTS
- COORDINATE DELIVERY SERVICES
- AUTOMOBILE RENTAL RESERVATIONS
- HOTEL AND GUEST SUITE RESERVATIONS
- LIMOUSINE/CAR SERVICE RESERVATIONS
- RESTAURANT INFORMATION/RESERVATIONS
- TOUR INFORMATION & RESERVATIONS
- SPA & SALON RESERVATIONS
- MOVE-IN COORDINATION
- THEATER & ENTERTAINMENT INFORMATION
- DOORMAN/PORTER SERVICES
- NOTARY PUBLIC SERVICES
- COMMON AREA HOUSEKEEPING
- COMMON AREA MAINTENANCE
- NEWSPAPER/MAGAZINE/PACKAGE DELIVERY

### À LA CARTE SERVICES (ADDITIONAL FEE)

- IN-RESIDENCE DINING AND CATERING FROM SIGNATURE ON-SITE RESTAURANT BY MICHELIN-STARRED CHEF, JOSÉ ANDRÉS
- ENGINEERING SERVICES
- GROCERY SHOPPING
- LAUNDRY/DRY CLEANING/ALTERATIONS
- CAR WASHING/DETAILING
- TRAVEL & VACATION PLANNING
- EQUIPMENT RENTAL
- SECRETARIAL SERVICES
- FUNCTION/EVENT PLANNING
- MAIL PACKING & SHIPPING
- PERSONAL CHEF SERVICES
- PERSONAL TRAINER
- IN-RESIDENCE SPA TREATMENTS/SERVICE
- NANNY/CHILDCARE SERVICES
- PET CARE/KENNEL RESERVATIONS

THE RITZ-CARLTON RESIDENCES, SOUTH BEACH

1671 COLLINS AVE MIAMI BEACH, FL 33139

•À LA CARTE SERVICES, AVAILABLE AT ADDITIONAL COST

THE RITZ-CARLTON RESIDENCES, SOUTH BEACH ARE NOT OWNED, DEVELOPED OR SOLD BY THE RITZ-CARLTON HOTEL COMPANY, L.L.C. OR ITS AFFILIATES ("RITZ-CARLTON"). SOME BY DEVELOPMENT, L.L.C. USES THE RITZ-CARLTON MARKS UNDER A LICENSE FROM RITZ-CARLTON, WHICH HAS NOT CONFIRMED THE ACCURACY OF ANY OF THE STATEMENTS OR REPRESENTATIONS MADE HEREIN. ALL DESCRIPTIONS OF FINISHES, SPECIFICATIONS, BRANDS, MODELS AND OTHER MATTERS OF DETAIL ARE CONCEPTUAL ONLY AND PROVIDED FOR CONVENIENCE OF REFERENCE AND SOLELY FOR THE PURPOSES OF SHOWING APPROXIMATE LEVEL OF QUALITY AND SHOULD NOT BE RELIED UPON BY BUYERS AS A BASIS FOR PURCHASING A UNIT. NOTHING HEREIN SHOULD BE RELIED UPON AS REPRESENTATIONS, EXPRESS OR IMPLIED, OF THE FINAL DETAIL OF THE UNIT OR PROJECT. THE INFORMATION PROVIDED INCLUDES SPECIFIC BRANDS, MODELS AND BRANDS, BASED UPON CURRENTLY AVAILABLE INFORMATION AND IS FOR INFORMATIONAL PURPOSES AND IS SUBJECT TO CHANGE WITHOUT NOTICE. ALL LISTED ITEMS ARE BASED UPON TODAY'S CURRENT MODELS AND FINISHES AND MAY VARY FROM DESIGNER MODELS AND OFFERINGS AT THE TIME OF PURCHASE FOR INSTALLATION IN THE UNIT. DEVELOPER HAS THE RIGHT TO MODIFY, SUBSTITUTE OR CHANGE MATERIALS, SPECIFICATIONS AND/OR COLORS UTILIZED IN FLOOR, WALL, DOOR, CABINETRY, COUNTERTOPS AND OTHER ITEMS OF FINISH. CERTAIN OF THE FOREGOING ITEMS ARE SUBJECT TO SIZE AND COLOR VARIATIONS, DESIGN AND QUALITY VARIATIONS, AND MAY VARY IN ACCORDANCE WITH PRICE, AVAILABILITY AND CHANGES IN MANUFACTURING PRACTICES. THESE CHANGES ARE HEREBY NOTICED TO BE AS A RESULT OF ACTUAL DISCREPANCIES BETWEEN THE TOP OF THE FINISHED CEILING AND THE UNDERSIDE OF THE FINISHED CEILING DROPPED AND/OR REPOSITIONED. ALL LISTED APPLIANCES, SERVICES AND MEMBERS OF THE DESIGN TEAM ARE SUBJECT TO CHANGE WITHOUT NOTICE. ALL RITZ-CARLTON SERVICES ARE CONDITIONED UPON APPROPRIATE LICENSES AND/OR AGREEMENTS BEING MAINTAINED FOR THE PROVISION OF SUCH SERVICES. CERTAIN SERVICES MAY BE OFFERED FOR A SEPARATE FEE OR AN À LA CARTE BASIS. ONLY ORAL REPRESENTATIONS CANNOT BE RELIED UPON AS CORRECTLY STATING THE REPRESENTATIONS OF THE DEVELOPER. FOR CORRECT REPRESENTATIONS, VERIFICATION SHOULD BE MADE TO THE LOCAL REAL ESTATE BROKER/SECTION PRICES FLOOR STRIPES TO BE FURNISHED BY A DEVELOPER TO BUYER OR LESSEE. 3. THIS OFFERING IS MADE ONLY BY THE OFFERING DOCUMENTS FOR THE CONDOMINIUM AND NO STATEMENT SHOULD BE RELIED UPON IF NOT MADE IN THE OFFERING DOCUMENTS. THIS IS NOT AN OFFER TO SELL OR SOLICITATION OF OFFERS TO BUY THE CONDOMINIUM UNITS IN STATES WHERE SUCH OFFER OR SOLICITATION CANNOT BE MADE. PRICES, PLANS AND SPECIFICATIONS ARE SUBJECT TO CHANGE WITHOUT NOTICE.

WE ARE PLEDGED TO THE LETTER AND SPIRIT OF THE U.S. POLICY FOR ACHIEVEMENT OF EQUAL HOUSING OPPORTUNITY THROUGHOUT THE NATION. WE ENCOURAGE AND SUPPORT AN AFFIRMATIVE ADVERTISING AND MARKETING PROGRAM IN WHICH THERE ARE NO BARRIERS TO OBTAINING HOUSING BECAUSE OF RACE, COLOR, RELIGION, SEX, HANDICAP, RACIAL STATUS OR NATIONAL ORIGIN.



## THE RITZ-CARLTON RESIDENCES

SOUTH BEACH

### OWNER BENEFITS WITH MARRIOTT INTERNATIONAL

RESIDENCE OWNERS AT THE RITZ-CARLTON RESIDENCES, SOUTH BEACH RECEIVE BENEFITS AT OVER 700 PARTICIPATING HOTELS WITHIN MARRIOTT INTERNATIONAL'S LUXURY PORTFOLIO, INCLUDING EDITION, THE RITZ-CARLTON, ST. REGIS, LUXURY COLLECTION, W, AND JW MARRIOTT.

#### CURRENT BENEFITS INCLUDE:

- 10% OFF REGULAR ROOM RATE, BASED ON AVAILABILITY
- UPGRADE AT CHECK-IN BASED UPON AVAILABILITY
- BREAKFAST FOR TWO DAILY
- 4 P.M. CHECKOUT BASED UPON AVAILABILITY
- WELCOME AMENITY AND NOTE FROM THE HOTEL'S GENERAL MANAGER
- A SPECIAL ADDITIONAL HOTEL AMENITY, USUALLY A FOOD AND BEVERAGE OR SPA CREDIT
- COMPLIMENTARY BASIC HIGH-SPEED WIRELESS INTERNET ACCESS

THE RITZ-CARLTON RESIDENCES, SOUTH BEACH

1671 COLLINS AVE MIAMI BEACH, FL 33139

THE RITZ-CARLTON RESIDENCES, SOUTH BEACH ARE NOT OWNED, DEVELOPED OR SOLD BY THE RITZ-CARLTON HOTEL COMPANY, L.L.C. OR ITS AFFILIATES. THE RITZ-CARLTON, SOBEY DEVELOPMENT LLC USES THE RITZ-CARLTON MARKS UNDER A LICENSE FROM RITZ-CARLTON, WHICH HAS NOT CONFIRMED THE ACCURACY OF ANY OF THE STATEMENTS OR REPRESENTATIONS MADE HEREIN. ALL DESCRIPTIONS OF FINISHES, SPECIFICATIONS, BRANDS, MODELS AND OTHER MATTERS OF DETAIL ARE CONCEPTUAL ONLY AND PROVIDED FOR CONVENIENCE OF REFERENCE AND SOLELY FOR THE PURPOSE OF SHOWING APPROXIMATE LEVEL OF QUALITY AND SHOULD NOT BE RELIED UPON BY BUYER AS A BASIS FOR PURCHASING A UNIT. NOTHING HEREIN SHOULD BE RELIED UPON AS REPRESENTATIONS, EXPRESS OR IMPLIED, OF THE FINAL DETAIL OF THE UNIT OR PROJECT. THE INFORMATION PROVIDED INCLUDES SPECIFIC BRANDS, MODELS AND BRANDS, BASED UPON THE CURRENTLY AVAILABLE INFORMATION, AND IS SUBJECT TO CHANGE WITHOUT NOTICE. ALL LISTED ITEMS ARE BASED UPON TODAY'S EXISTING MODELS AND OF FINISHES AND MATERIALS FROM DESIGNER MODELS AND OFFERINGS AT THE TIME OF PURCHASE. FOR INSTALLATION IN THE UNIT, DEVELOPER HAS THE RIGHT TO MODIFY, SUBSTITUTE OR CHANGE MATERIALS, SPECIFICATIONS AND/OR COLORS UTILIZED IN FLOOR, WALL, DOOR, CABINETS, COUNTERTOPS AND OTHER ITEMS OF FINISH. CERTAIN OF THE FOREGOING ITEMS ARE SUBJECT TO SIZE AND COLOR VARIATIONS, DESIGN AND QUALITY VARIATIONS, AND MAY VARY IN ACCORDANCE WITH PRICE, AVAILABILITY AND CHANGES IN MATERIALS AND FINISHES. THESE VARIATIONS ARE HEADLINE PROPORTION OF SIZE TO TOP OF ISLAND AS INDICATED. ACTUAL CLIMATIC CHANGES BETWEEN THE TOP OF THE FINISHED DOOR THRESHOLD AND THE UNDERSIDE OF THE FINISHED CEILING, DOORS AND WINDOW SILL ARE APPROXIMATE AND SUBJECT TO CHANGE. ALL LISTED AMENITIES, SERVICES AND MEMBERSHIP OF THE DEVELOPER ARE SUBJECT TO CHANGE WITHOUT NOTICE. ALL RITZ-CARLTON SERVICES ARE CONDITIONED UPON APPROPRIATE LICENSES AND OR AGREEMENTS BEING MAINTAINED FOR THE PROVISION OF SUCH SERVICES. CERTAIN SERVICES MAY BE OFFERED FOR A SEPARATE FEE OR ON A LIMITED BASIS. ONLY ORAL REPRESENTATIONS CANNOT BE RELIED UPON AS CORRECTLY STATING THE REPRESENTATIONS OF THE DEVELOPER. FOR CORRECT REPRESENTATIONS, REFERENCE SHOULD BE MADE TO THE DOCUMENTS REQUIRED BY SECTION 718.03(2)(F) FLORIDA STATUTES TO BE FURNISHED BY A DEVELOPER TO A BUYER OR LESSEE. 2. THIS OFFERING IS MADE ONLY BY THE OFFERING DOCUMENTS FOR THE CONDOMINIUM AND NO STATEMENT SHOULD BE RELIED UPON IF NOT MADE IN THE OFFERING DOCUMENTS. THIS IS NOT AN OFFER TO SELL OR SOLICITATION OF OFFERS TO BUY THE CONDOMINIUM UNITS IN STATES WHERE SUCH OFFER OR SOLICITATION CANNOT BE MADE. PRICES, PLANS AND SPECIFICATIONS ARE SUBJECT TO CHANGE WITHOUT NOTICE.

WE ARE PLEDGED TO THE LETTER AND SPIRIT OF THE U.S. POLICY FOR ACHIEVEMENT OF EQUAL HOUSING OPPORTUNITY THROUGHOUT THE NATION. WE ENCOURAGE AND SUPPORT AN AFFIRMATIVE ADVERTISING AND MARKETING PROGRAM IN WHICH THERE ARE NO BARRIERS TO OBTAINING HOUSING BECAUSE OF RACE, COLOR, RELIGION, SEX, HANDICAP, RACIAL STATUS OR NATIONAL ORIGIN.



# THE RITZ-CARLTON RESIDENCES

SOUTH BEACH

## THE TEAM

### SOBE SKY DEVELOPMENT, LLC

DEVELOPER

### KOBI KARP ARCHITECTURE & INTERIOR DESIGN INC.

ARCHITECT

KKAID'S MODERN DESIGNS AND ARCHITECTURAL WORK HAVE BEEN PUBLISHED AND RECOGNIZED INTERNATIONALLY. THEY ARE INSPIRED BY THE VERNACULAR OF THE ENVIRONMENTS IN WHICH THEY RESIDE. ITS STANDARD ALLOWS FOR THE FOCUS OF THE NEW DESIGN TO RELATE TO ITS LOGISTICAL AND HISTORICAL CONTEXTS. THE FIRM SPECIALIZES IN COLLABORATING WITH CLIENTS TO REACH THEIR PROJECT'S MISSION WHILE WORKING WITHIN THEIR BUDGETARY PARAMETERS. THE FIRM UNDERSTANDS THE NEED TO CREATE VIABLE COMMERCIAL, RESIDENTIAL, AND MIXED-USE ENVIRONMENTS THAT PRODUCE A VALUED RETURN ON INVESTMENT. KKAID BELIEVES THAT EACH PROJECT MUST BE DELIVERED ON TIME, WITHIN BUDGET-EVERY TIME.

### STUDIO MUNGE

INTERIOR DESIGN

STUDIO MUNGE HAS BEEN REVOLUTIONIZING THE DESIGN INDUSTRY AS A MULTIDISCIPLINARY DESIGN COLLECTIVE FOR OVER 20 YEARS. DRIVEN BY A PASSION FOR CULTURAL TRAVEL, HUMAN EXPERIENCE AND THE ARTS, FOUNDER AND DESIGN DIRECTOR, ALESSANDRO MUNGE, ALONG WITH AN INTERNATIONAL TEAM OF OVER FIFTY, CONTINUES DEFYING CONVENTIONAL DESIGN NORMS, RESULTING IN AWE-INSPIRING SPACES THAT TRANSCEND EXPECTATION. WITH GLOBAL OPERATIONS BRANCHING ACROSS NORTH AMERICA IN MIAMI AND TORONTO, ASIA-PACIFIC, AND THE MIDDLE EAST, STUDIO MUNGE BRINGS TO LIFE AWARD-WINNING LUXURY RESIDENTIAL AND HOSPITALITY PROJECTS IN PARTNERSHIP WITH WORLD-RENOWNED ARCHITECTS, VISIONARY GLOBAL DEVELOPERS, AND HOTEL OPERATORS. INSPIRED BY ALESSANDRO'S CREATIVE VISION, STUDIO MUNGE'S HOLISTIC STYLE AND INQUISITIVE NATURE HAVE POSITIONED THE FIRM AS AN INDUSTRY LEADER, REDEFINING BOUTIQUE LUXURY WHILE CREATING MEMORABLE AND TRANSFORMATIVE EXPERIENCES. RECENT STUDIO MUNGE APPOINTMENTS INCLUDE THE RITZ-CARLTON RESIDENCES, SOUTJ BEACH, SOFIA MIAMI IN THE DESIGN DISTRICT IN COLLABORATION WITH LVMH, EDITION RESIDENCES MIAMI EDGEWATER, AN EXPANSIVE RAFFLES HOTEL IN THE MIDDLE EAST, THE FIRST INTEGRATED NOBU HOTEL, RESIDENCES AND RESTAURANT IN TORONTO'S ENTERTAINMENT DISTRICT, PENDRY HOTELS IN CHICAGO, NEWPORT BEACH AND TAMPA. IN ASIA, STUDIO MUNGE DELIVERS AN MGM AND DIAOYUTAI HOTEL IN QINGDAO AND A SHANGRI-LA HOTEL IN NANNING AS WELL AS SEVERAL EXCLUSIVE RESIDENTIAL PROPERTIES IN HONG KONG AND VIP LOUNGE IN SINGAPORE'S MARINA BAY SANDS.

### NATURALFICIAL

LANDSCAPE ARCHITECT

NATURALFICIAL IS A MIAMI-BASED PRACTICE DEDICATED TO THE EXPLORATION AND DESIGN OF CONTEMPORARY CONSTRUCTED ENVIRONMENTS. IT WAS CONCEIVED BY FOUNDING PRINCIPAL ANDRES ARCILA, WHO ATTENDED FLORIDA INTERNATIONAL UNIVERSITY SCHOOL OF ARCHITECTURE, AND GRADUATED WITH HONORS AND HOLDS A DEGREE IN ARCHITECTURAL DESIGN FROM PARSONS SCHOOL OF DESIGN IN NEW YORK CITY.

NATURALFICIAL'S INTEREST LIES IN THE EXPLORATION AND MANIFESTATION BETWEEN NATURAL AND ARTIFICIAL CONDITIONS. UNDERSTANDING THAT THE DELINEATION OF THE NATURAL AND THE ARTIFICIAL HAS BEEN BLURRED, HAS GIVEN RISE TO A NEW HYBRIDIZED, PARADOXICAL CONDITION, WHICH THEY HAVE COINED AS "NATURALFICIAL". A CONDITION IN WHICH NATURE IS OFTEN PRESENTED AS THE SUBJECT OF KNOWLEDGE AND THE AESTHETIC OF EXPERIENCE; NEVERTHELESS, FORMULATED THROUGH A SERIES OF FABRICATED AND OR MANIPULATED MAN MADE INTERVENTIONS THAT ARE CONTINUOUSLY BEING QUESTIONED AND LEAD US TO RE-THINK OUR PERCEPTION AND RELATIONSHIP TOWARDS OUR BUILT AND NATURAL ENVIRONMENTS.

THE RITZ-CARLTON RESIDENCES, SOUTH BEACH

1671 COLLINS AVE MIAMI BEACH, FL 33139

THE RITZ-CARLTON RESIDENCES, SAGAMORE SOUTH BEACH ARE NOT OWNED, DEVELOPED OR SOLD BY THE RITZ-CARLTON HOTEL COMPANY, L.L.C. OR ITS AFFILIATES. THE RITZ-CARLTON, SOBE SKY DEVELOPMENT, LLC USES THE RITZ-CARLTON MARKS UNDER A LICENSE FROM RITZ-CARLTON, WHICH HAS NOT CONFIRMED THE ACCURACY OF ANY OF THE STATEMENTS OR REPRESENTATIONS MADE. HEREBY, DESCRIPTIONS OF FINISHES, SPECIFICATIONS, BRANDS, MODELS AND OTHER MATTERS OF DETAIL ARE CONCEPTUAL ONLY AND PROVIDED FOR CONVENIENCE OF REFERENCE AND SOLELY FOR THE PURPOSE OF SHOWING APPROXIMATE LEVEL OF QUALITY AND SHOULD NOT BE RELIED UPON BY ANY AS A BASIS FOR PURCHASING A UNIT. ACTING HEREIN SHOULD BE RELIED UPON AS REPRESENTATIONS, EXPRESS OR IMPLIED, OF THE FINAL DETAIL OF THE UNIT OR PROJECT. THE INFORMATION PROVIDED INCLUDES SPECIFIC BRAND, MODEL, SIZE, BRANDS, DIMENSIONS, COLOURS, MATERIALS, SPECIFICATIONS AND COLOURS UTILIZED IN FLOOR, WALL, DOOR, CABINETS, COUNTERTOPS AND OTHER ITEMS OF FINISH. CERTAIN OF THE FOREGOING ITEMS ARE SUBJECT TO SIZE AND COLOUR VARIATIONS, DESIGN AND QUALITY VARIATIONS, AND MAY VARY IN ACCORDANCE WITH PRICE, AVAILABLE CITY AND TO CHANGES IN MATERIALS, BRANDS, DIMENSIONS, COLOURS, MATERIALS, SPECIFICATIONS AND COLOURS UTILIZED IN FLOOR, WALL, DOOR, CABINETS, COUNTERTOPS AND OTHER ITEMS OF FINISH. ALL COLOURS, DIMENSIONS, APPROXIMATE AND SUBJECT TO CHANGE. ALL LISTED APPLIANCES, SERVICES AND MEMBERS OF THE DESIGN TEAM ARE SUBJECT TO CHANGE WITHOUT NOTICE. ALL RITZ-CARLTON SERVICES ARE CONDITIONED UPON APPROPRIATE LICENSES AND/OR AGREEMENTS BEING MAINTAINED FOR THE PROVISION OF SUCH SERVICES. CERTAIN SERVICES MAY BE OFFERED FOR AN ADDITIONAL FEE OR AN ADDITIONAL FEE OR AN ADDITIONAL FEE OR AN ADDITIONAL FEE. ONLY ORAL REPRESENTATIONS CANNOT BE RELIED UPON AS CORRECTLY STATING THE REPRESENTATIONS OF THE DEVELOPER. FOR CORRECT REPRESENTATIONS, REPRESENTERS SHOULD BE MADE TO THE DEVELOPER'S HEADQUARTERS IN FLORIDA. THESE OFFERS OR SOLICITATIONS CANNOT BE MADE. PRICES, PLANS, AND SPECIFICATIONS ARE SUBJECT TO CHANGE WITHOUT NOTICE.

WE ARE PLEDGED TO THE LETTER AND SPIRIT OF THE U.S. POLICY FOR ACHIEVEMENT OF EQUAL HOUSING OPPORTUNITY THROUGHOUT THE NATION. WE ENCOURAGE AND SUPPORT AN AFFIRMATIVE ADVERTISING AND MARKETING PROGRAM IN WHICH THERE ARE NO BARRIERS TO OBTAINING HOUSING BECAUSE OF RACE, COLOR, RELIGION, SEX, HANDICAP, RACIAL STATUS OR NATIONAL ORIGIN.



















# THE RITZ-CARLTON



# AMENITIES





























THE RITZ-CARLTON  
RESIDENCES

SOUTH BEACH













SUITE



















































































THE RITZ-CARLTON RESIDENCES  
SOUTH BEACH

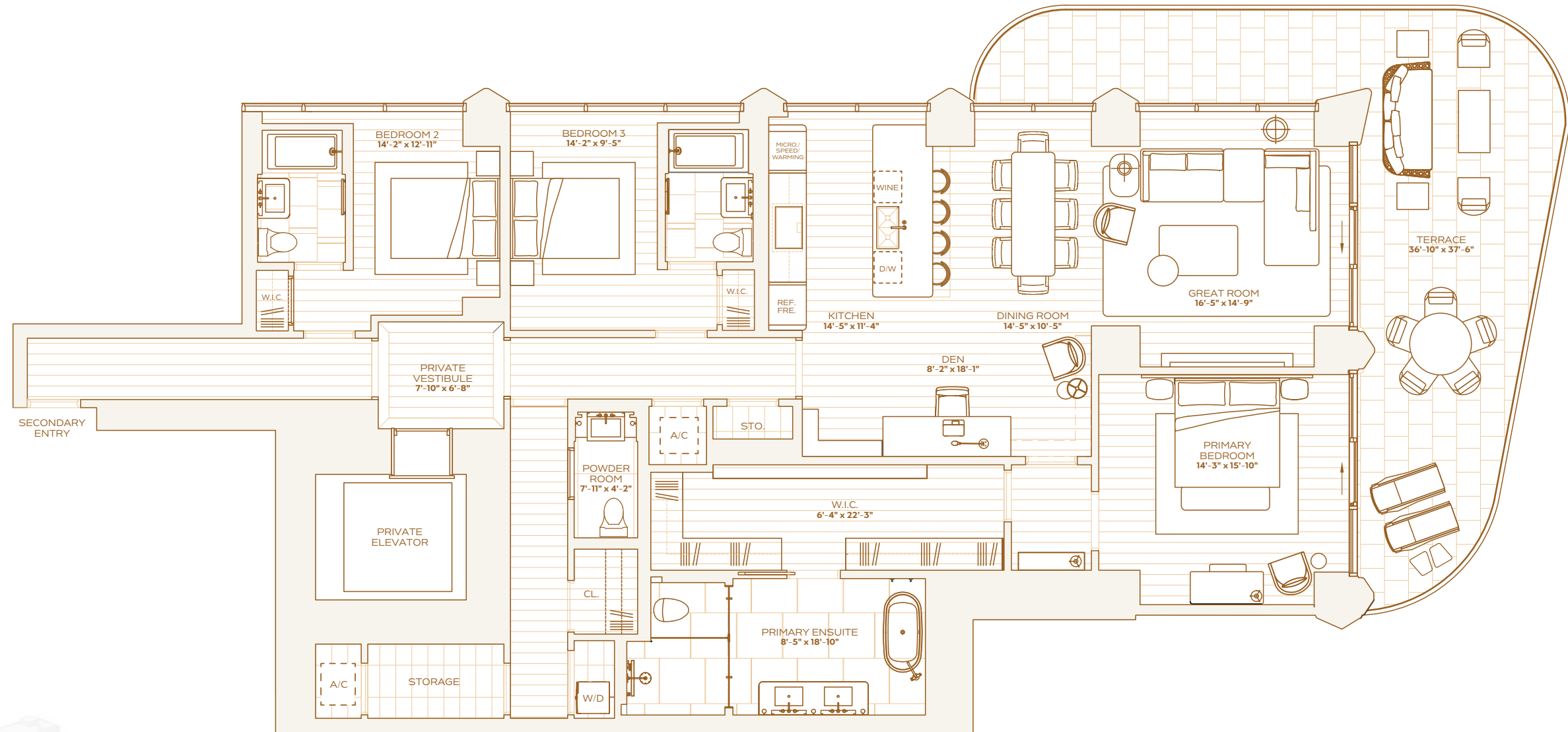
## RESIDENCE A LEVEL 5 & 6

THREE BEDROOMS  
THREE BATHROOMS  
POWDER ROOM

**INTERIOR**  
2,389 SQ. FT. / 222 SQ. M

**EXTERIOR**  
602 SQ. FT. / 56 SQ. M

**TOTAL**  
2,991 SQ. FT. / 278 SQ. M







THE RITZ-CARLTON RESIDENCES  
SOUTH BEACH

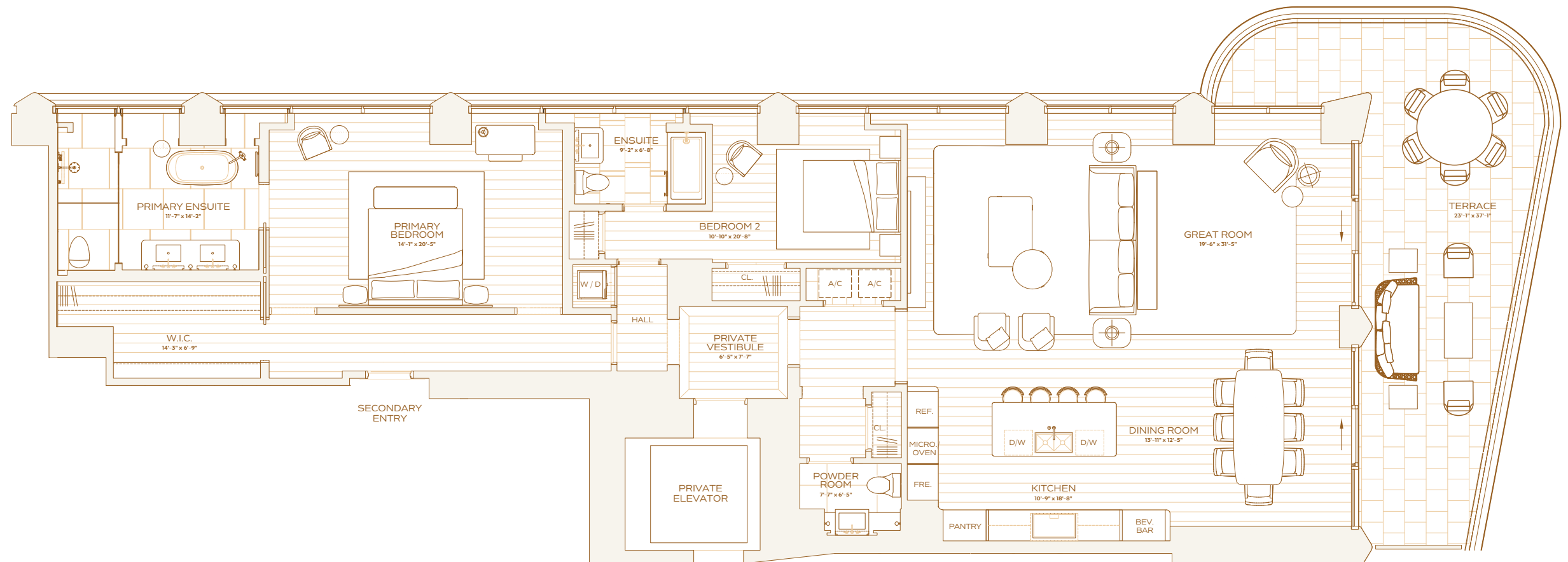
## RESIDENCE A LEVEL 8

TWO BEDROOMS  
TWO BATHROOMS  
POWDER ROOM

**INTERIOR**  
2,210 SQ. FT. / 205 SQ. M

**EXTERIOR**  
449 SQ. FT. / 42 SQ. M

**TOTAL**  
2,659 SQ. FT. / 247 SQ. M





THE RITZ-CARLTON RESIDENCES  
SOUTH BEACH

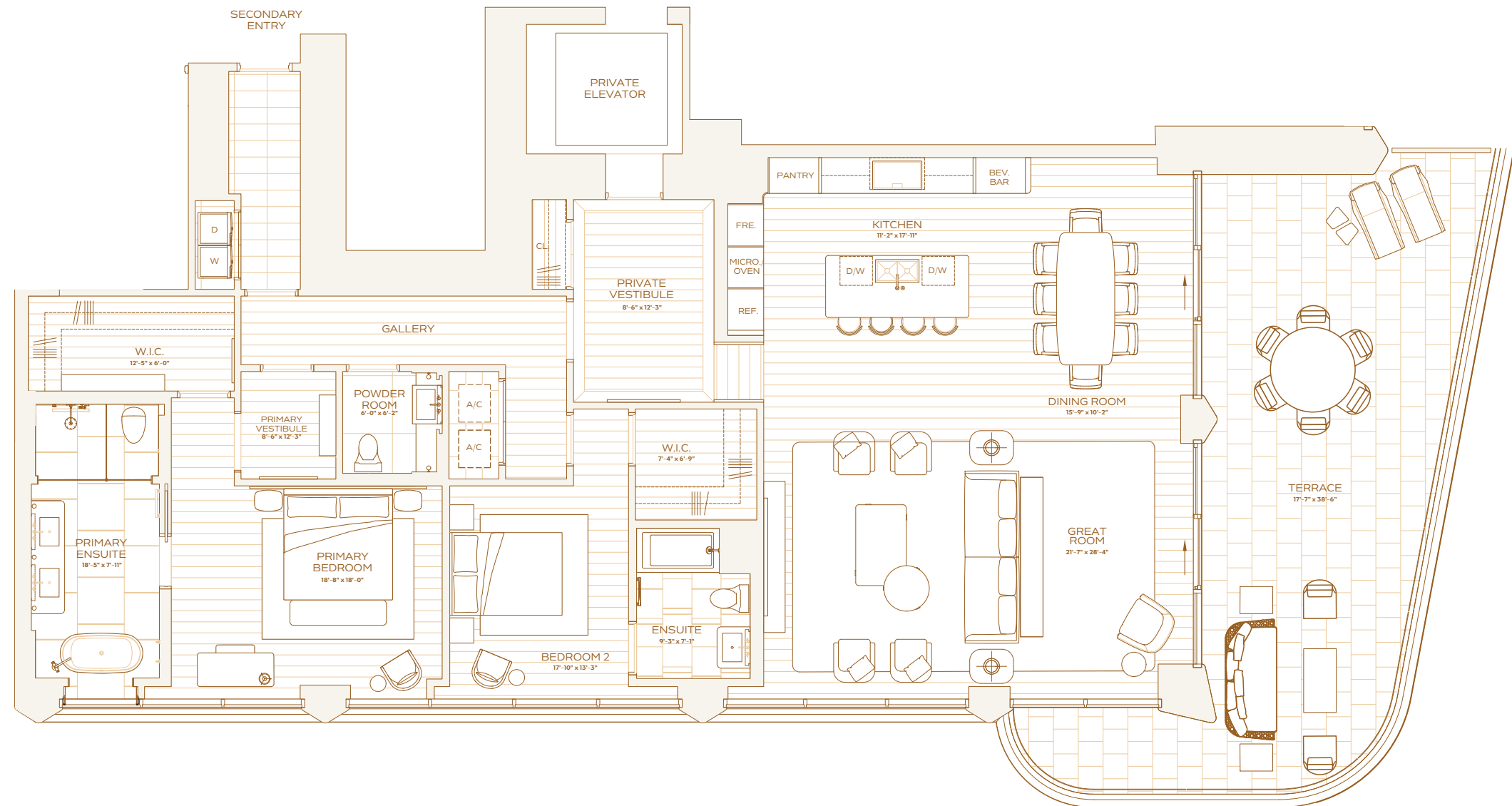
## RESIDENCE B LEVEL 8

TWO BEDROOMS  
TWO BATHROOMS  
POWDER ROOM

**INTERIOR**  
2,217 SQ. FT. / 205 SQ. M

**EXTERIOR**  
591 SQ. FT. / 55 SQ. M

**TOTAL**  
2,808 SQ. FT. / 261 SQ. M



OCEAN





THE RITZ-CARLTON RESIDENCES  
SOUTH BEACH

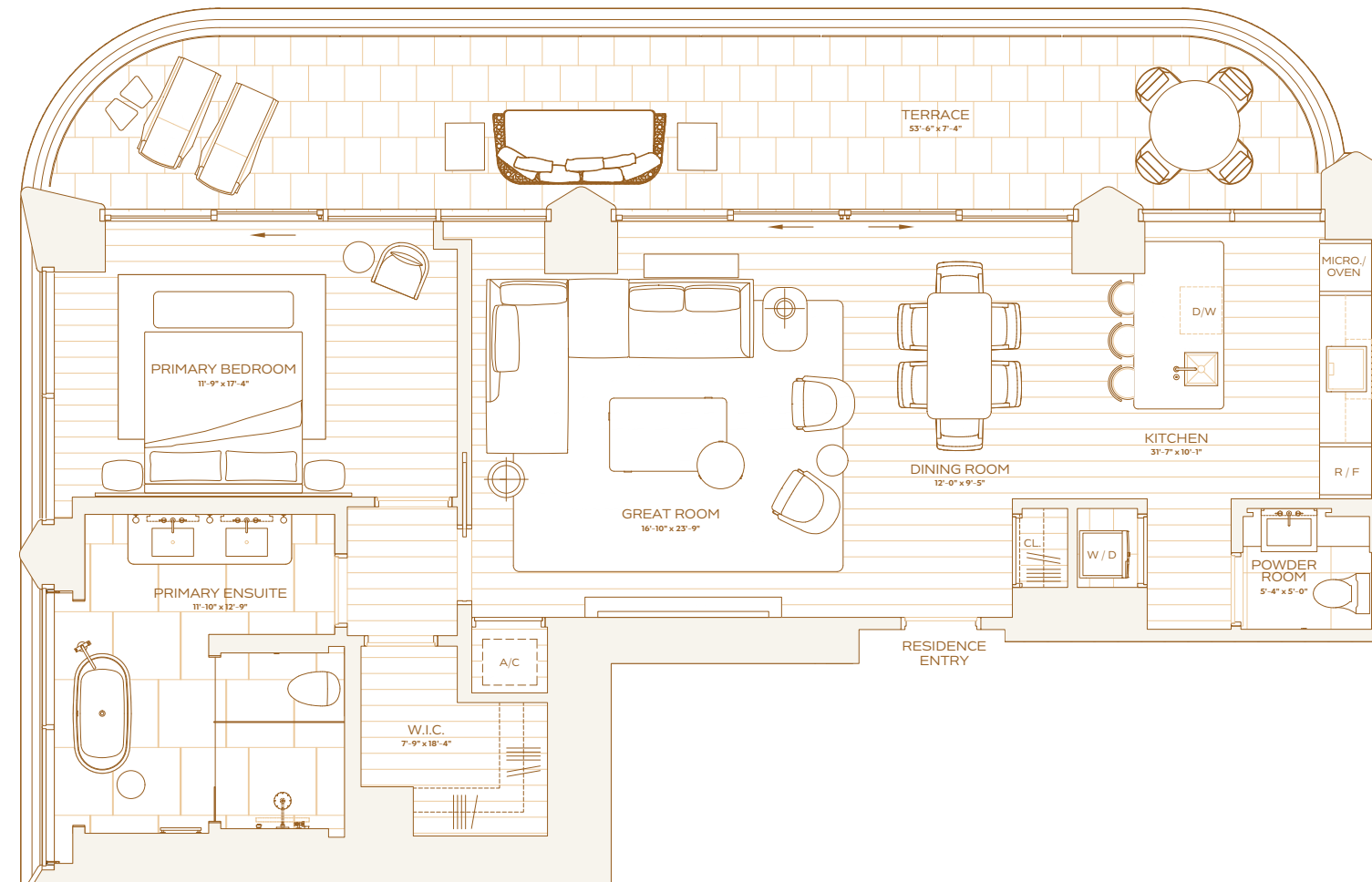
## RESIDENCE D LEVEL 8

ONE BEDROOM  
ONE BATHROOM  
POWDER ROOM

**INTERIOR**  
1,197 SQ. FT. / 111 SQ. M

**EXTERIOR**  
385 SQ. FT. / 36 SQ. M

**TOTAL**  
1,582 SQ. FT. / 147 SQ. M





THE RITZ-CARLTON RESIDENCES  
SOUTH BEACH

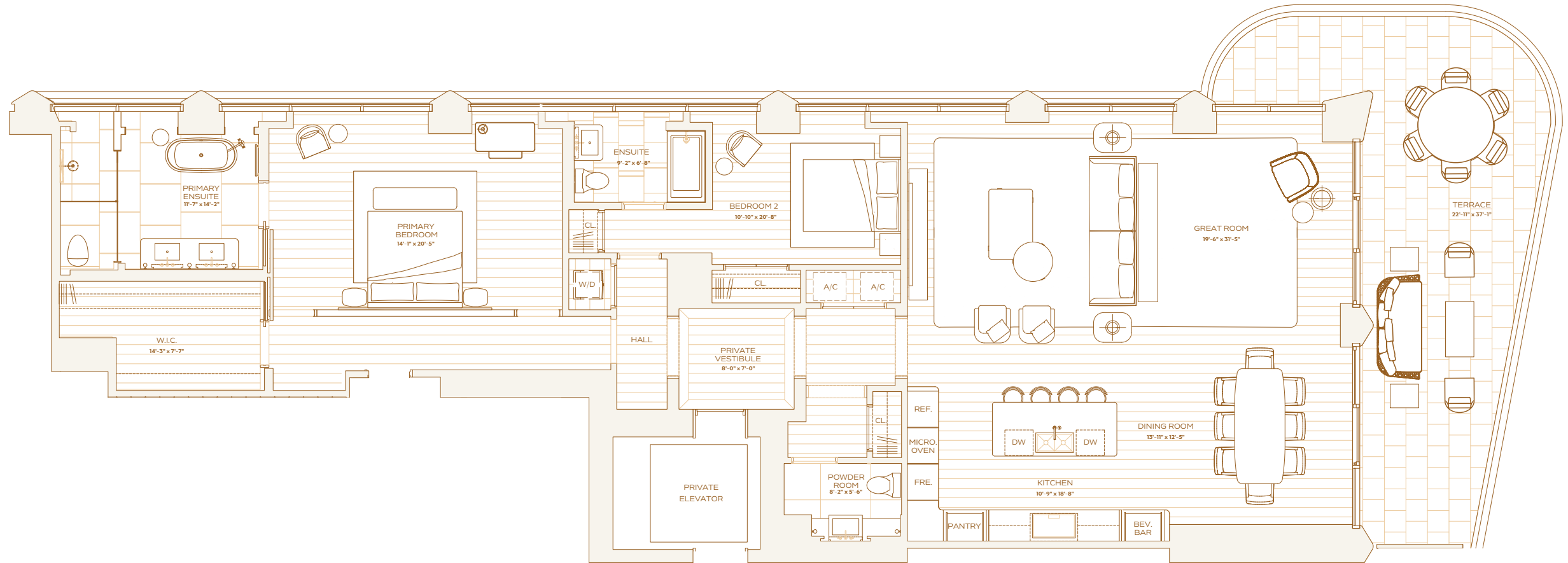
## RESIDENCE A LEVEL 9 & 10

TWO BEDROOMS  
TWO BATHROOMS  
POWDER ROOM

**INTERIOR**  
2,245 SQ. FT. / 208 SQ. M

**EXTERIOR**  
449 SQ. FT. / 42 SQ. M

**TOTAL**  
2,694 SQ. FT. / 250 SQ. M



OCEAN







THE RITZ-CARLTON RESIDENCES  
SOUTH BEACH

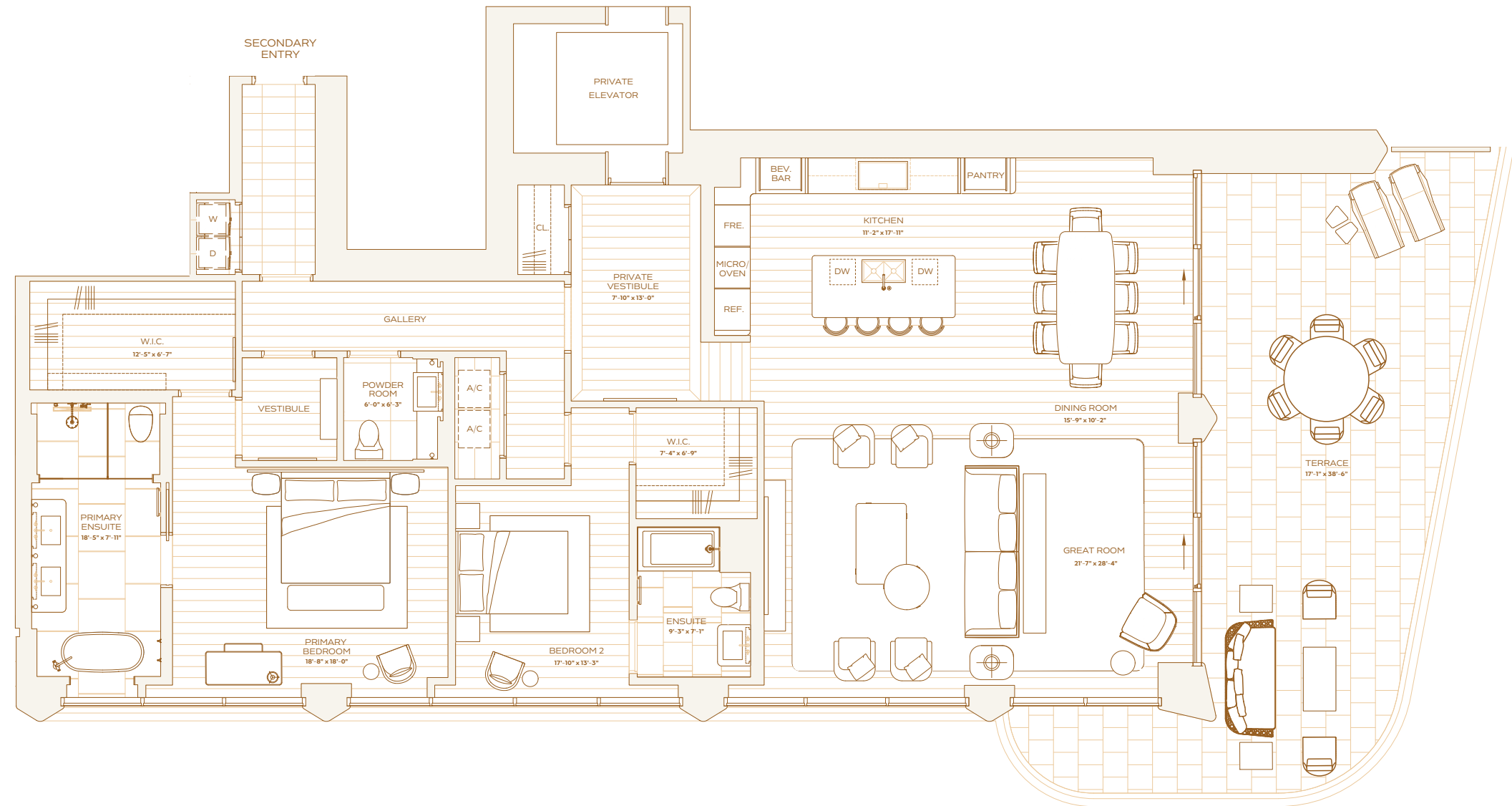
## RESIDENCE B LEVEL 9 & 10

TWO BEDROOMS  
TWO BATHROOMS  
POWDER ROOM

**INTERIOR**  
2,247 SQ. FT. / 209 SQ. M

**EXTERIOR**  
591 SQ. FT. / 55 SQ. M

**TOTAL**  
2,838 SQ. FT. / 264 SQ. M



OCEAN



THE RITZ-CARLTON RESIDENCES  
SOUTH BEACH

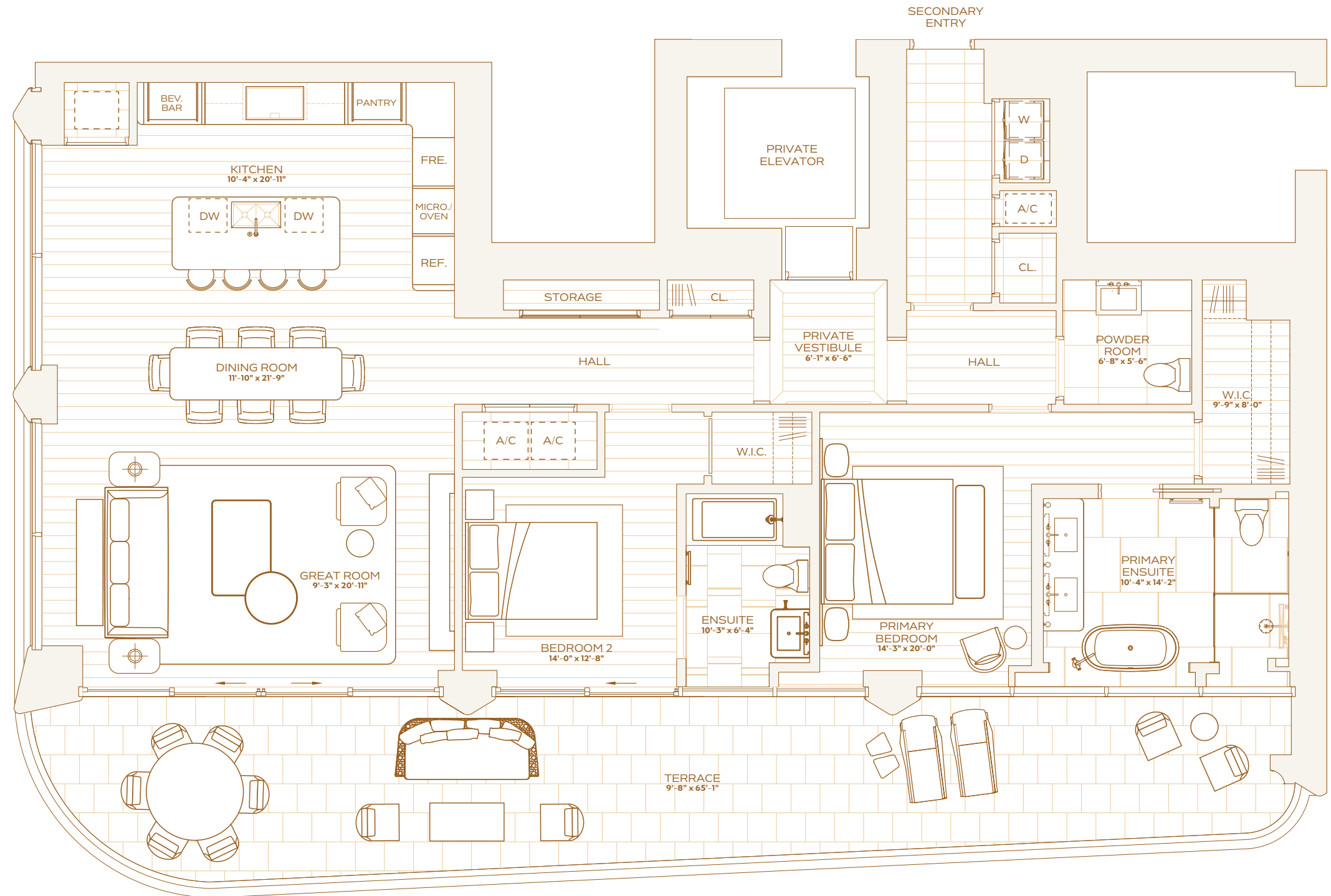
## RESIDENCE C LEVEL 9 & 10

TWO BEDROOMS  
TWO BATHROOMS  
POWDER ROOM

**INTERIOR**  
1,781 SQ. FT. / 165 SQ. M

**EXTERIOR**  
527 SQ. FT. / 49 SQ. M

**TOTAL**  
2,308 SQ. FT. / 214 SQ. M







THE RITZ-CARLTON RESIDENCES  
SOUTH BEACH

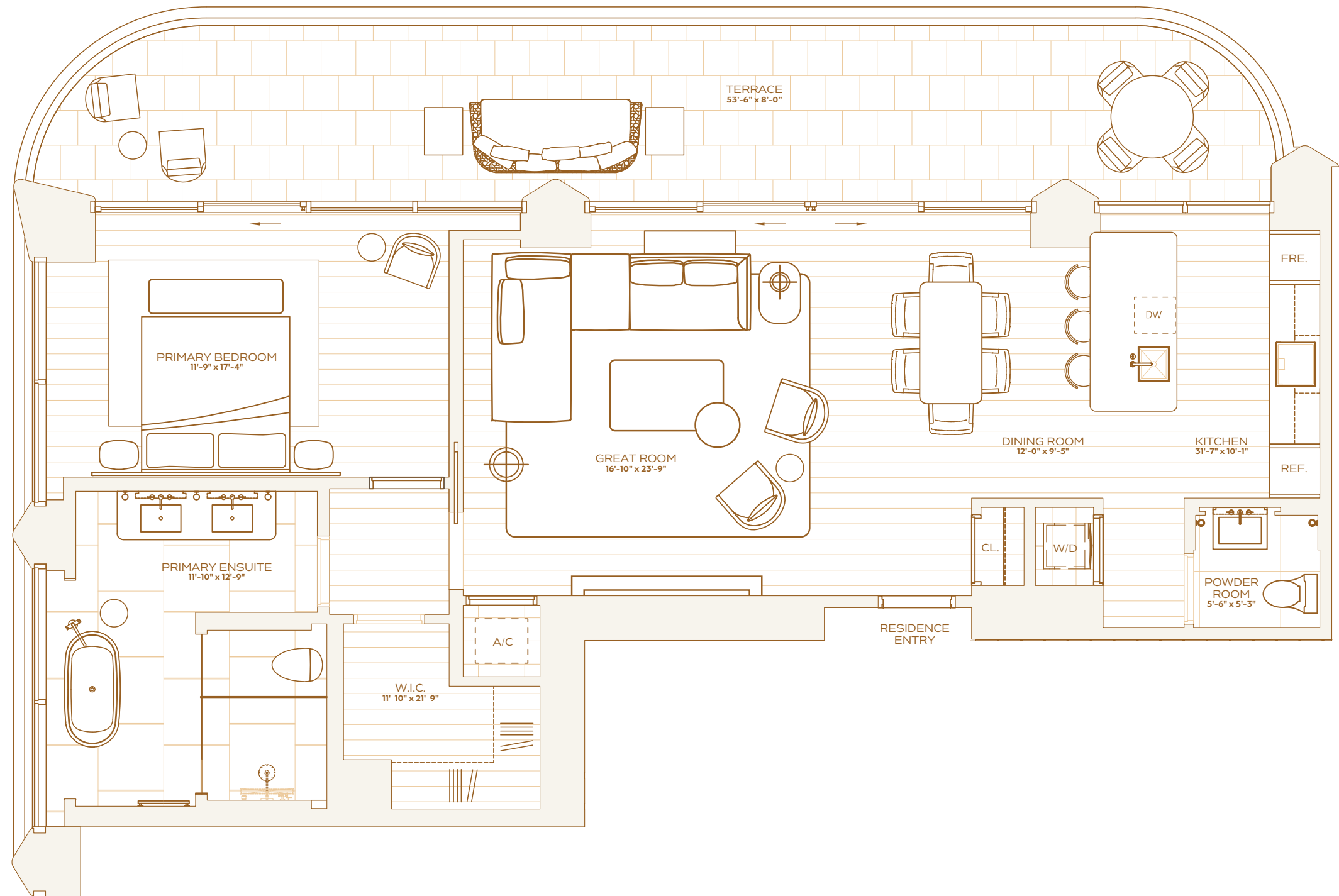
## RESIDENCE D LEVEL 9 & 10

ONE BEDROOM  
ONE BATHROOM  
POWDER ROOM

**INTERIOR**  
1,210 SQ. FT / 112 SQ. M

**EXTERIOR**  
385 SQ. FT / 36 SQ. M

**TOTAL**  
1,595 SQ. FT / 148 SQ. M





THE RITZ-CARLTON RESIDENCES  
SOUTH BEACH

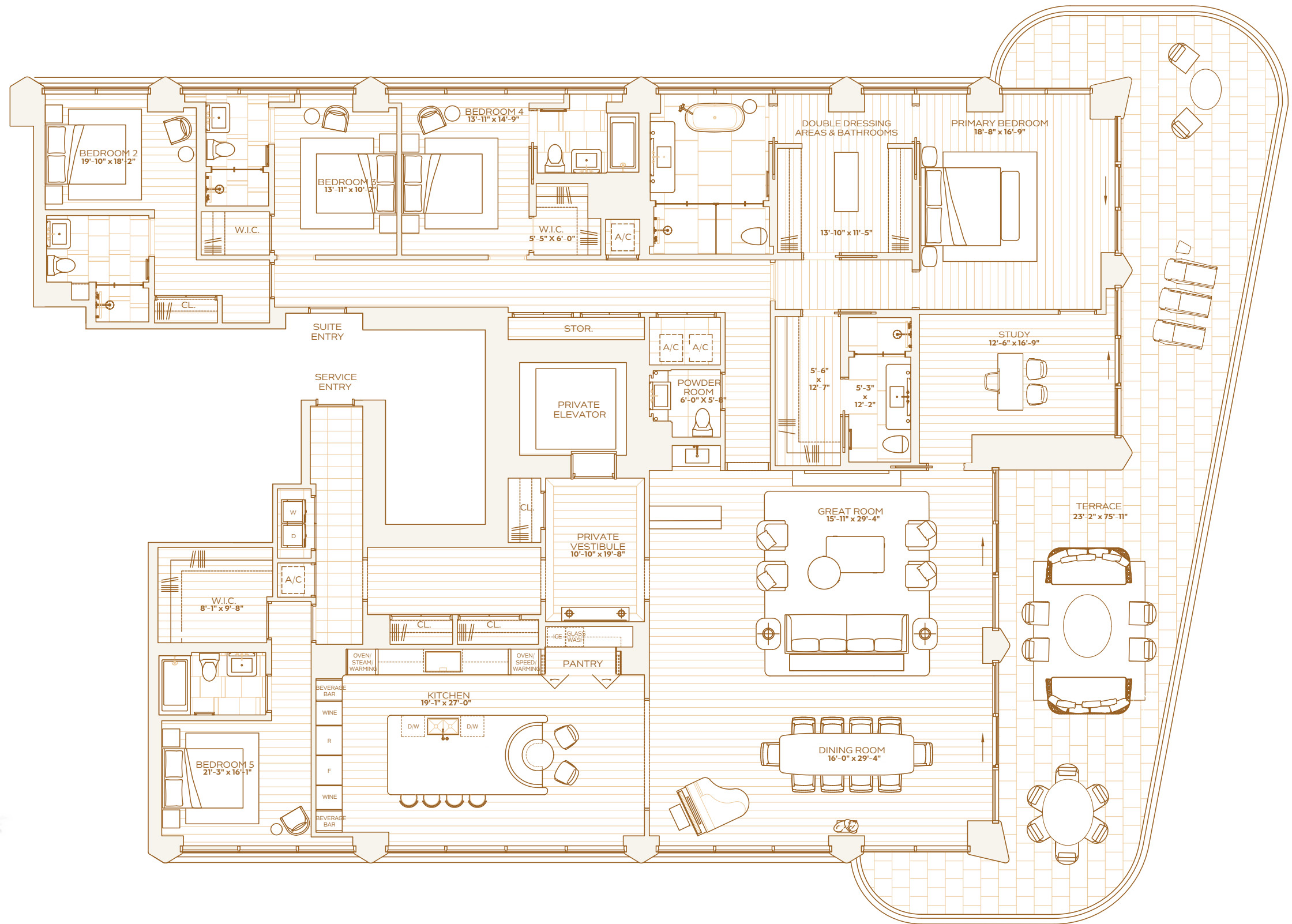
## RESIDENCE A LEVEL 11-12

FIVE BEDROOMS  
SIX BATHROOMS  
POWDER ROOM

**INTERIOR**  
4,481 SQ. FT. / 416 SQ. M

**EXTERIOR**  
1,040 SQ. FT. / 96 SQ. M

**TOTAL**  
5,521 SQ. FT. / 513 SQ. M







THE RITZ-CARLTON RESIDENCES  
SOUTH BEACH

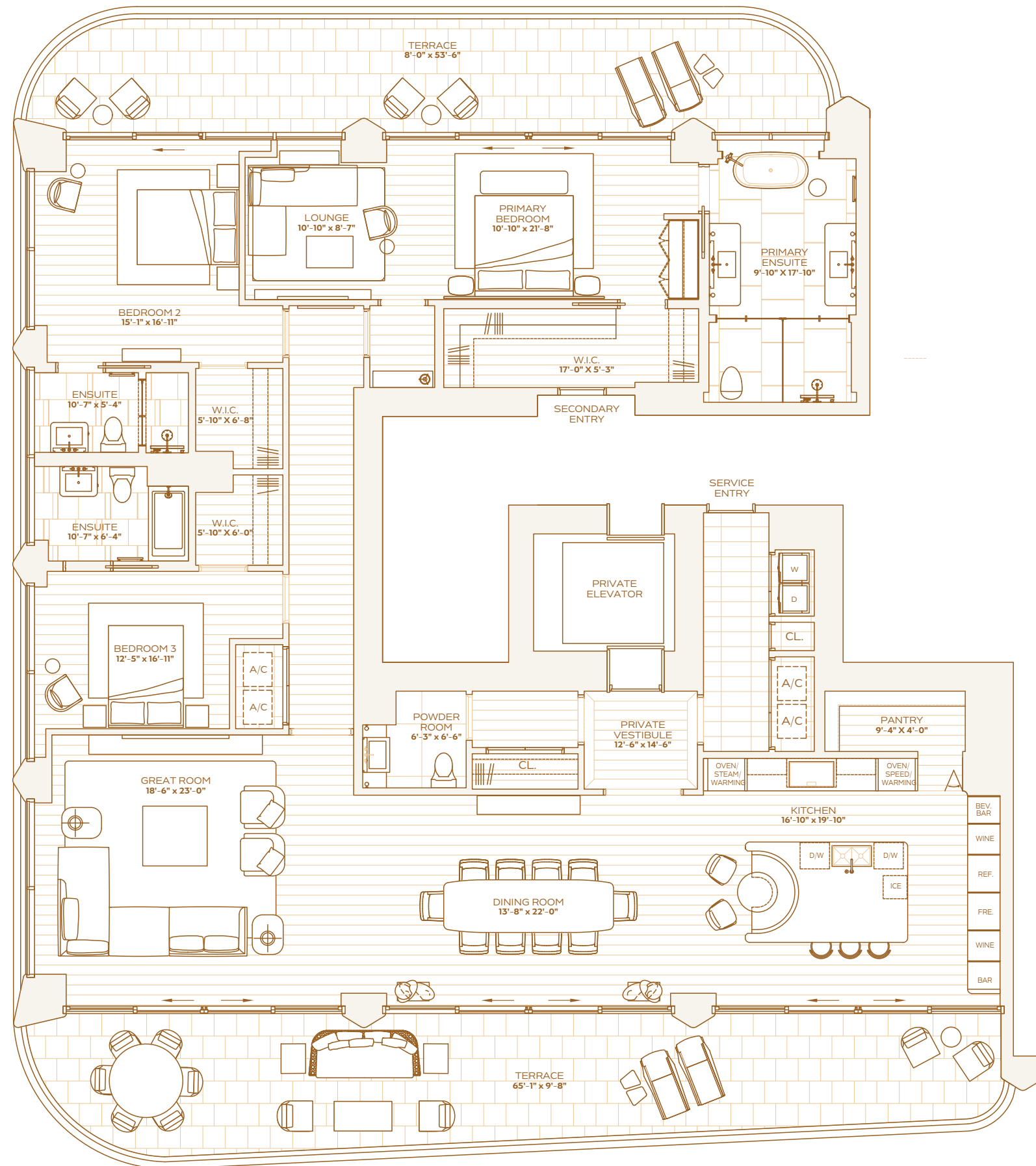
## RESIDENCE B LEVEL 11-12

THREE BEDROOMS  
THREE BATHROOMS  
POWDER ROOM

**INTERIOR**  
3,006 SQ. FT. / 279 SQ. M

**EXTERIOR**  
912 SQ. FT. / 85 SQ. M

**TOTAL**  
3,918 SQ. FT. / 364 SQ. M



OCEAN



THE RITZ-CARLTON RESIDENCES  
SOUTH BEACH

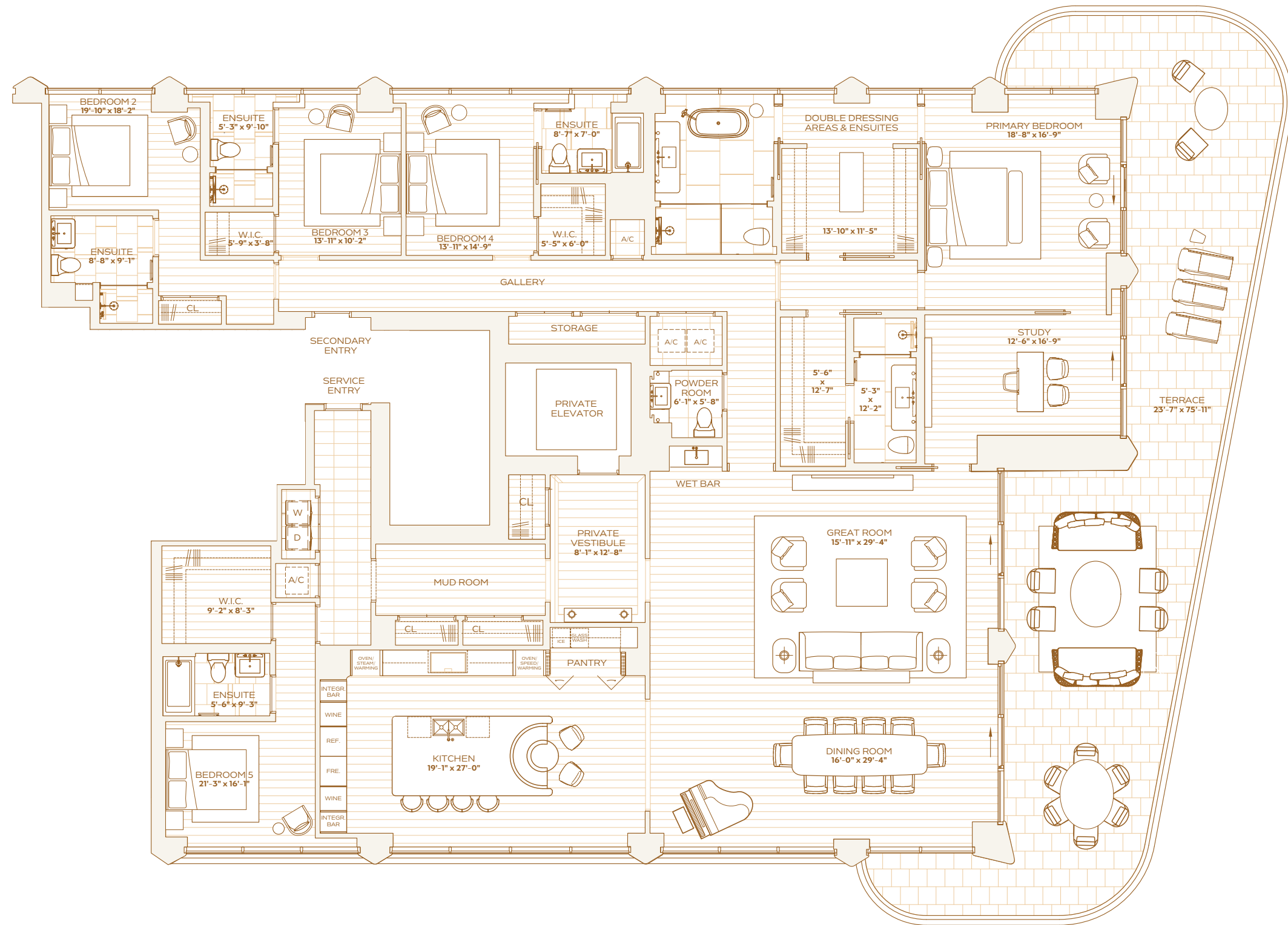
## RESIDENCE A LEVEL 14-16

FIVE BEDROOMS  
STUDY  
SIX BATHROOMS  
POWDER ROOM

**INTERIOR**  
4,520 SQ. FT. / 420 SQ. M

**EXTERIOR**  
1,040 SQ. FT. / 97 SQ. M

**TOTAL**  
5,560 SQ. FT. / 517 SQ. M



OCEAN





THE RITZ-CARLTON RESIDENCES  
SOUTH BEACH

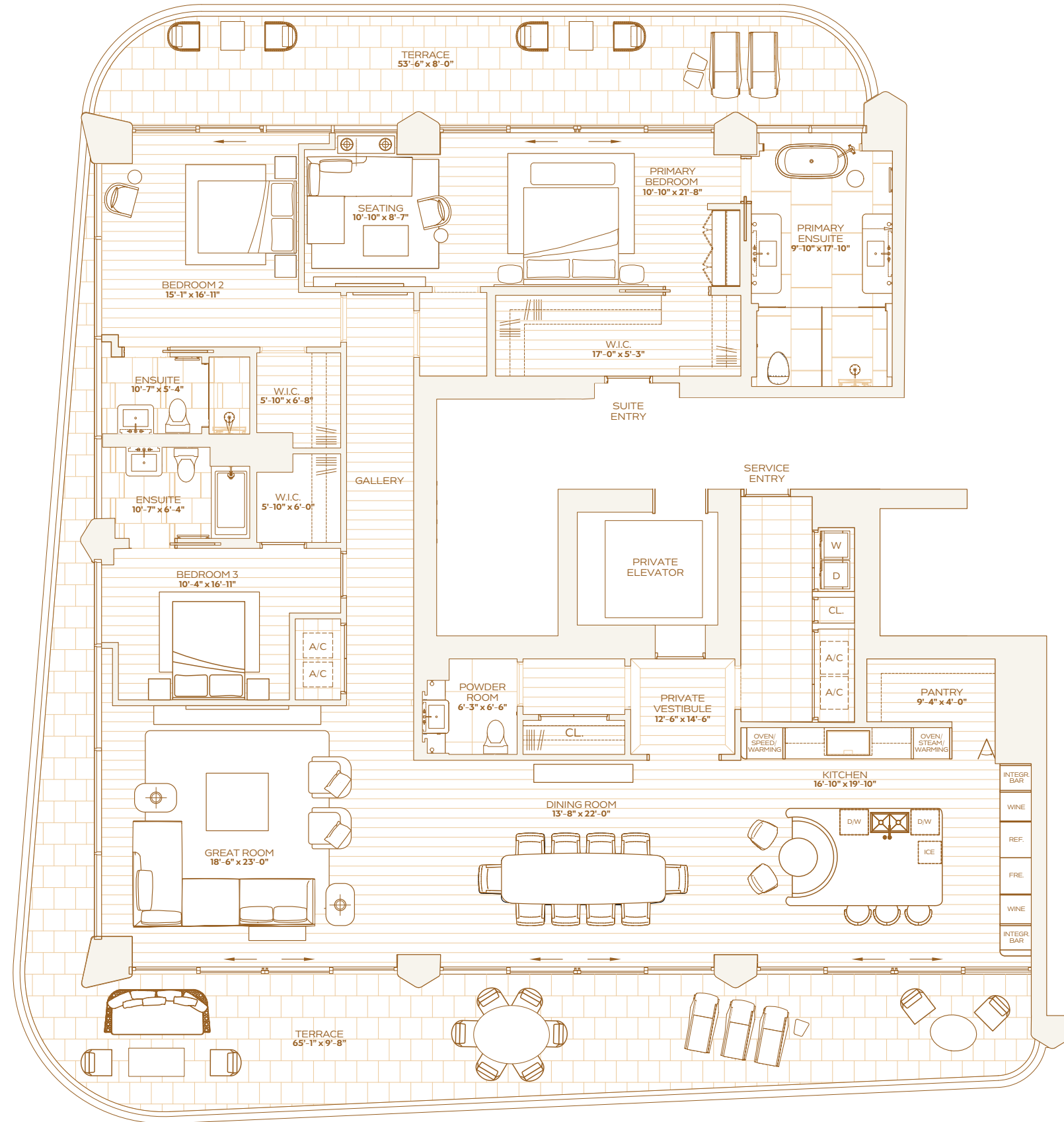
## RESIDENCE B LEVEL 14-16

THREE BEDROOMS  
THREE BATHROOMS  
POWDER ROOM

**INTERIOR**  
3,006 SQ. FT. / 279 SQ. M

**EXTERIOR**  
912 SQ. FT. / 85 SQ. M

**TOTAL**  
3,918 SQ. FT. / 364 SQ. M



OCEAN



THE RITZ-CARLTON RESIDENCES  
SOUTH BEACH

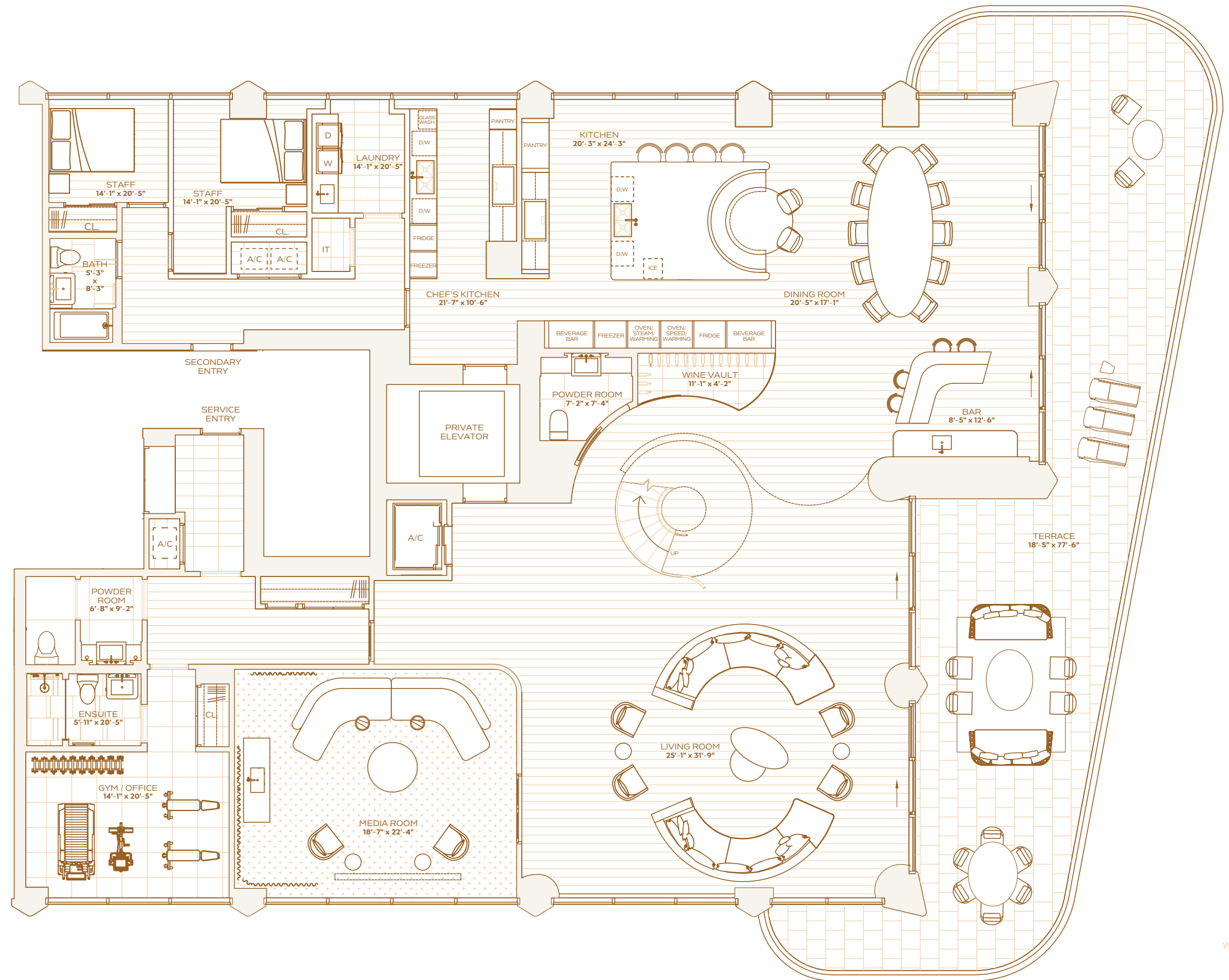
## PENTHOUSE A LEVEL 17 LOWER FLOOR

SEVEN BEDROOMS  
EIGHT BATHROOMS  
TWO POWDER ROOMS

**INTERIOR**  
8,104 SQ. FT. / 753 SQ. M

**EXTERIOR**  
1,482 SQ. FT. / 137 SQ. M

**TOTAL**  
9,586 SQ. FT. / 890 SQ. M



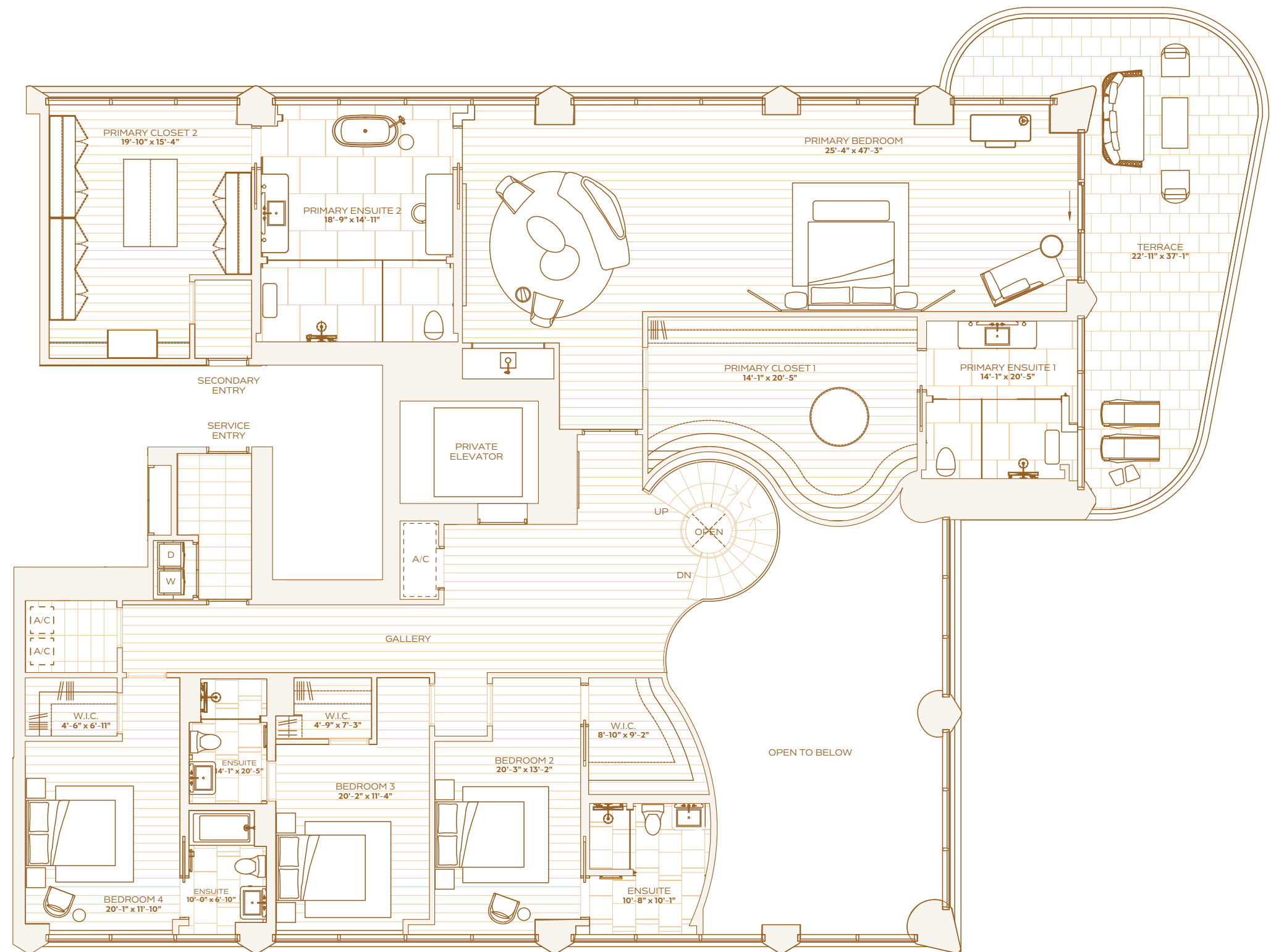




SEVEN BEDROOMS  
EIGHT BATHROOMS  
TWO POWDER ROOMS

**EXTERIOR**  
1,482 SQ. FT. / 137 SQ. M

**TOTAL**  
9,586 SQ. FT / 890 SQ. M



OCEAN



THE RITZ-CARLTON RESIDENCES  
SOUTH BEACH

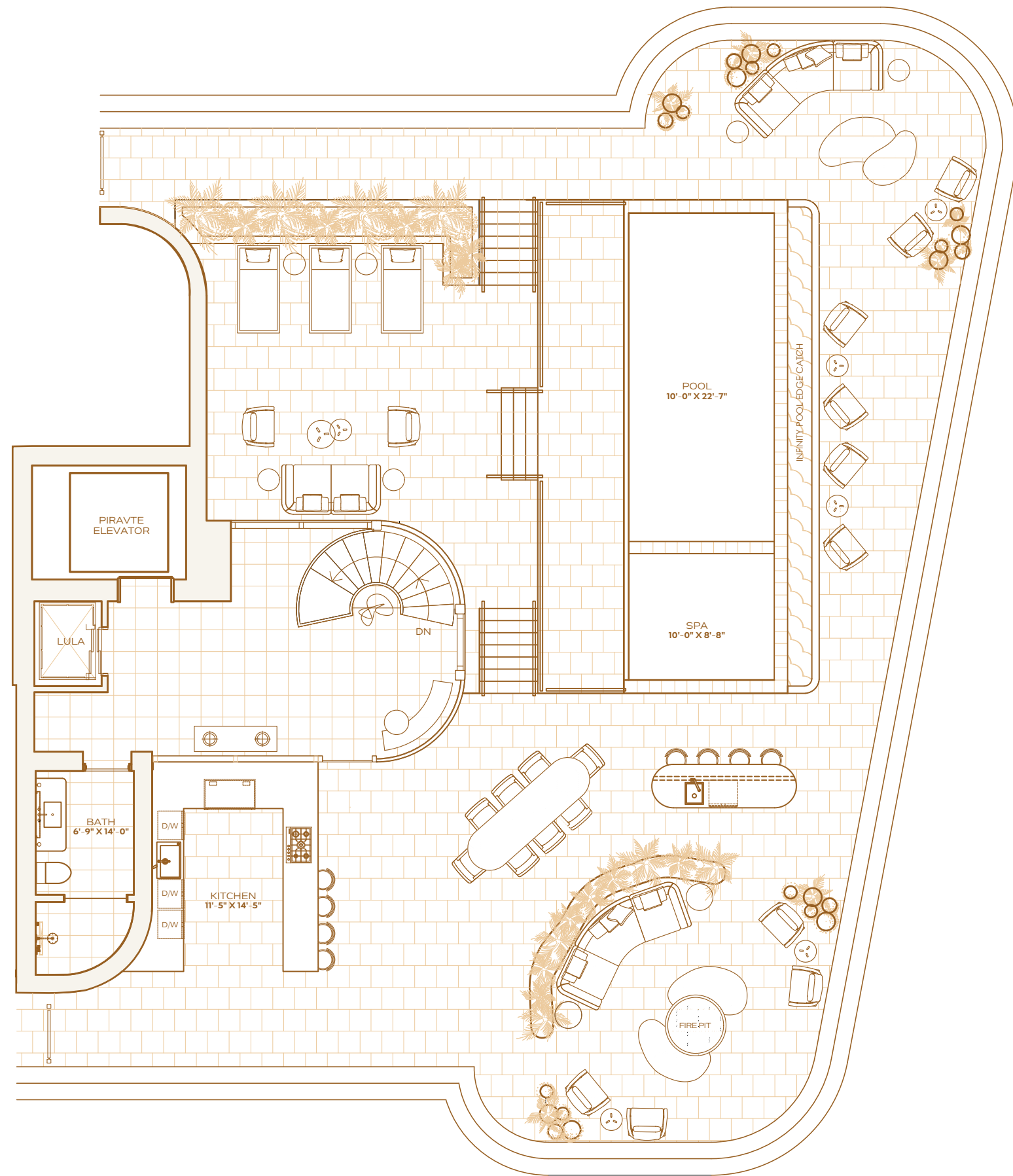
## PENTHOUSE A LEVEL 19 ROOFTOP

SEVEN BEDROOMS  
EIGHT BATHROOMS  
TWO POWDER ROOMS

**INTERIOR**  
8,104 SQ. FT. / 753 SQ. M

**EXTERIOR**  
1,482 SQ. FT. / 137 SQ. M

**TOTAL**  
9,586 SQ. FT. / 890 SQ. M



OCEAN





THE RITZ-CARLTON RESIDENCES  
SOUTH BEACH

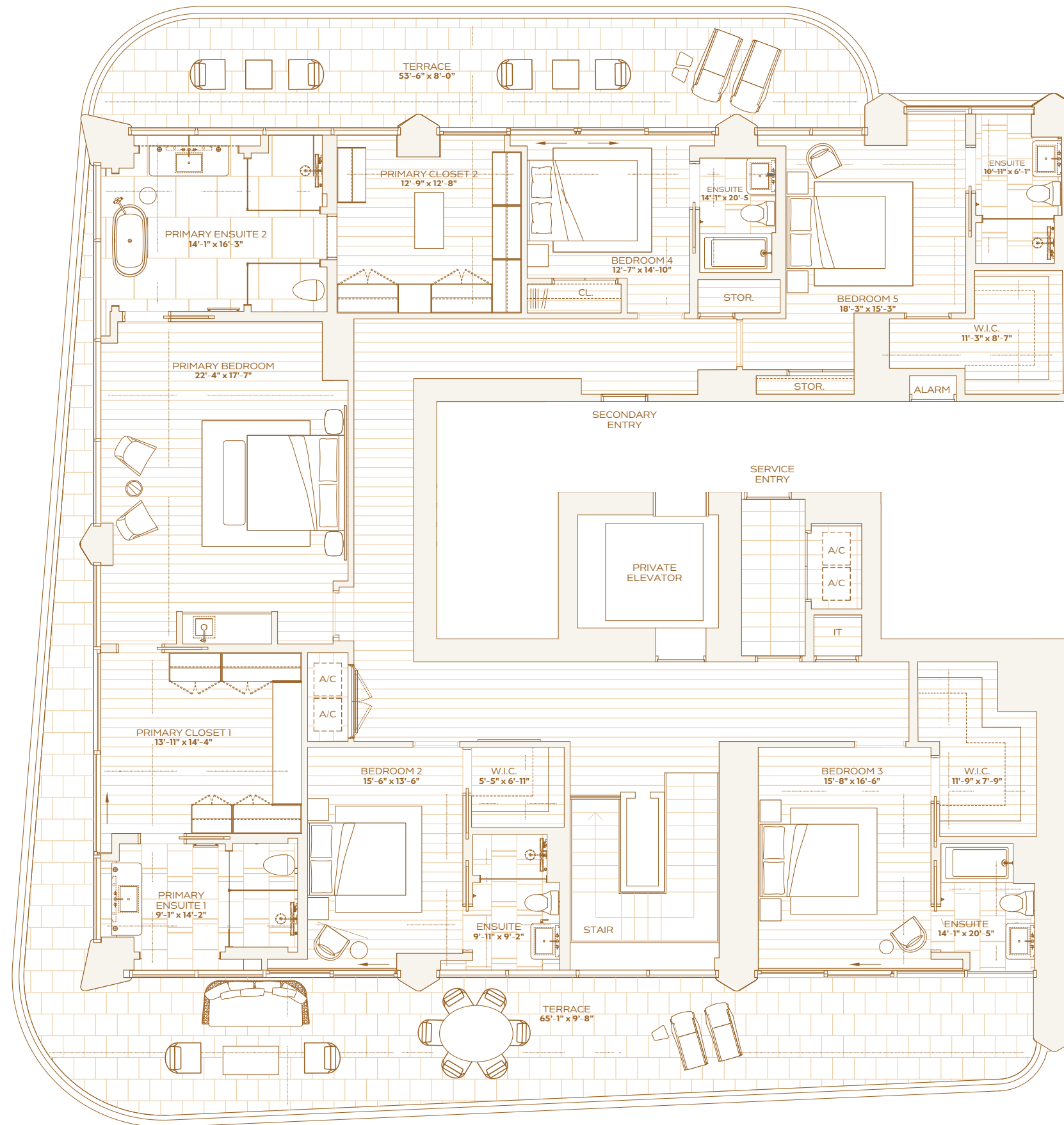
## PENTHOUSE B LEVEL 18 UPPER FLOOR

SIX BEDROOMS  
SEVEN BATHROOMS  
TWO POWDER ROOMS

**INTERIOR**  
6,534 SQ. FT. / 607 SQ. M

**EXTERIOR**  
2,236 SQ. FT. / 208 SQ. M

**TOTAL**  
8,770 SQ. FT. / 815 SQ. M





THE RITZ-CARLTON RESIDENCES  
SOUTH BEACH

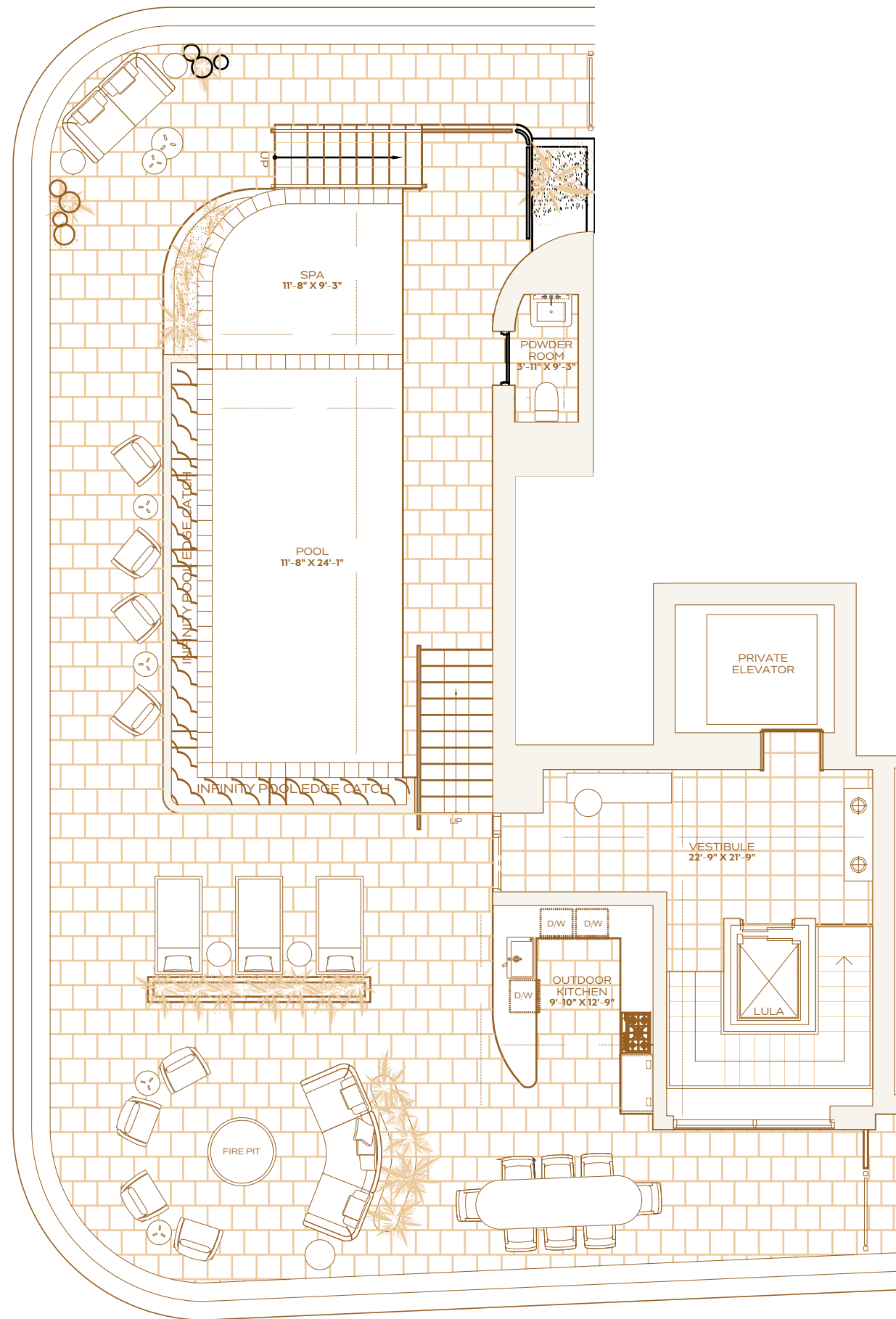
## PENTHOUSE B LEVEL 19 ROOFTOP

SIX BEDROOMS  
SEVEN BATHROOMS  
TWO POWDER ROOMS

**INTERIOR**  
6,534 SQ. FT. / 607 SQ. M

**EXTERIOR**  
2,236 SQ. FT. / 208 SQ. M

**TOTAL**  
8,770 SQ. FT. / 815 SQ. M



OCEAN